



**C**ONVECTIVE  
STORM  
(DAY-TIME)

- Used tools:
- MSG Data Manager PRO
- Geosatsignal 7

# SETTING MDM

- MSG Data Manager PRO
- GO SETUP - ADVANCED SETUP

• CHANNEL:	MIN:	MAX:	GAMMA:
• 5	20	1023	100
• 6	10	710	100
• 4*	53	1023	244
• 9*	103	850	160
• 1	51	1023	100
• 3	51	1023	100

# \*NOTE

\* CHANNEL 4 AND 9 – CALIBRATE  
THERMAL OFF!!

# CHANNEL 5

## MSG Data Manager - Advanced Setup

11	12	GOES-W vis	GOES-W mid-ir	GOES-W ir	GOES-W wv	GOES-E Vis			
GOES-E mid-ir	GOES-E ir	GOES-E wv	MTSAT vis	MTSAT mid-ir	MTSAT ir	MTSAT ir12	MTSAT wv	Met5 vis	
Met5 ir	Met5 wv	Met7 vis	Met7 ir	Met7 wv	FY ir1	FY ir2	FY ir3	FY ir4	FY vis
FY vis 1km	GOMS vis	GOMS ir4	GOMS ir6	GOMS ir8	GOMS ir9	GOMS ir10			
1	2	3	4	5	6	7	8	9	10

### Channel 5 - WV 6.2 $\mu$ m - transfer settings

Min 20

Gamma 100

Max 1023

Save as

PNG

Job 0

Save with overlay

(none)

City list

none

Marker list

none

Calibrate thermal

Save raw count

Default image with raw

### Centre HRV window

Upper

Lower

Centred on

Europe

### Image save options

JPEG save quality

Vis 100 IR 100

Resize

1

Save full HRV

Use N HRV

Extra raw PGM info

### Copyright

Location

None

Date & time

Use local time

Font...

### Cartography

Country boundary data file

C:\Program Files\MSG Software\MSG Data M: Browse...

Bold city markers

### Satellite

MSG-3

Delete other

OK

Cancel

Help



# CHANNEL 6

## MSG Data Manager - Advanced Setup

11	12	GOES-W vis	GOES-W mid-ir	GOES-W ir	GOES-W wv	GOES-E Vis			
GOES-E mid-ir	GOES-E ir	GOES-E wv	MTSAT vis	MTSAT mid-ir	MTSAT ir	MTSAT ir12	MTSAT wv	Met5 vis	
Met5 ir	Met5 wv	Met7 vis	Met7 ir	Met7 wv	FY ir1	FY ir2	FY ir3	FY ir4	FY vis
FY vis 1km	GOMS vis	GOMS ir4	GOMS ir6	GOMS ir8	GOMS ir9	GOMS ir10			
1	2	3	4	5	6	7	8	9	10

### Channel 6 - WV 7.3 $\mu$ m - transfer settings

Min

Gamma

Max

Save as

Job

Save with overlay

City list

Marker list

Calibrate thermal

Save raw count

Default image with raw

### Centre HRV window

Upper

Lower

Centred on

### Image save options

JPEG save quality

Vis  IR

Resize

Save full HRV

Use N HRV

Extra raw PGM info

### Copyright

Location

Date & time

Use local time

### Cartography

Country boundary data file

Bold city markers

### Satellite

Delete other

# CHANNEL 4

## MSG Data Manager - Advanced Setup

11	12	GOES-W vis	GOES-W mid-ir	GOES-W ir	GOES-W wv	GOES-E Vis			
GOES-E mid-ir	GOES-E ir	GOES-E wv	MTSAT vis	MTSAT mid-ir	MTSAT ir	MTSAT ir12	MTSAT wv	Met5 vis	
Met5 ir	Met5 wv	Met7 vis	Met7 ir	Met7 wv	FY ir1	FY ir2	FY ir3	FY ir4	FY vis
FY vis 1km	GOMS vis	GOMS ir4	GOMS ir6	GOMS ir8	GOMS ir9	GOMS ir10			
1	2	3	4	5	6	7	8	9	10

### Channel 4 - IR 3.9 $\mu$ m - transfer settings

Min 53

Gamma 244

Max 1023

Save as

PNG

Job 0

Save with overlay

(none)

City list

none

Marker list

none

Calibrate thermal

Save raw count

Default image with raw

### Centre HRV window

Upper

Lower

Centred on

Europe

### Image save options

JPEG save quality

Vis 100 IR 100

Resize

1

Save full HRV

Use N HRV

Extra raw PGM info

### Copyright

Location

None

Date & time

Use local time

Font...

### Cartography

Country boundary data file

C:\Program Files\MSG Software\MSG Data M:

Browse...

Bold city markers

### Satellite

MSG-3

Delete other

OK

Cancel

Help

# CHANNEL 9

## MSG Data Manager - Advanced Setup

11	12	GOES-W vis	GOES-W mid-ir	GOES-W ir	GOES-W wv	GOES-E Vis			
GOES-E mid-ir	GOES-E ir	GOES-E wv	MTSAT vis	MTSAT mid-ir	MTSAT ir	MTSAT ir12	MTSAT wv	Met5 vis	
Met5 ir	Met5 wv	Met7 vis	Met7 ir	Met7 wv	FY ir1	FY ir2	FY ir3	FY ir4	FY vis
FY vis 1km	GOMS vis	GOMS ir4	GOMS ir6	GOMS ir8	GOMS ir9	GOMS ir10			
1	2	3	4	5	6	7	8	9	10

### Channel 9 - IR 10.8 $\mu$ m - transfer settings

Min 103

Gamma 160

Max 850

Save as

PNG

Job 0

Save with overlay

(none)

City list

none

Marker list

none

Calibrate thermal

Save raw count

Default image with raw

### Centre HRV window

Upper

Lower

Centred on

Europe

### Image save options

JPEG save quality

Vis 100 IR 100

Resize

1

Save full HRV

Use N HRV

Extra raw PGM info

### Copyright

Location

None

Date & time

Use local time

Font...

### Cartography

Country boundary data file

C:\Program Files\MSG Software\MSG Data M: Browse...

Bold city markers

### Satellite

MSG-3

Delete other

OK

Cancel

Help



# CHANNEL 1

## MSG Data Manager - Advanced Setup

11	12	GOES-W vis	GOES-W mid-ir	GOES-W ir	GOES-W wv	GOES-E Vis			
GOES-E mid-ir	GOES-E ir	GOES-E wv	MTSAT vis	MTSAT mid-ir	MTSAT ir	MTSAT ir12	MTSAT wv	Met5 vis	
Met5 ir	Met5 wv	Met7 vis	Met7 ir	Met7 wv	FY ir1	FY ir2	FY ir3	FY ir4	FY vis
FY vis 1km	GOMS vis	GOMS ir4	GOMS ir6	GOMS ir8	GOMS ir9	GOMS ir10			
1	2	3	4	5	6	7	8	9	10

### Channel 1 - Vis 0.6 $\mu$ m - transfer settings

Min

Gamma

Max

Save as

Job

Save with overlay

City list

Marker list

Calibrate thermal

Save raw count

Default image with raw

### Centre HRV window

Upper

Lower

Centred on

### Image save options

JPEG save quality

Vis  IR

Resize

Save full HRV

Use N HRV

Extra raw PGM info

### Copyright

Location

Date & time

Use local time

### Cartography

Country boundary data file

Bold city markers

### Satellite

Delete other

# CHANNEL 3

## MSG Data Manager - Advanced Setup

11	12	GOES-W vis	GOES-W mid-ir	GOES-W ir	GOES-W wv	GOES-E Vis			
GOES-E mid-ir	GOES-E ir	GOES-E wv	MTSAT vis	MTSAT mid-ir	MTSAT ir	MTSAT ir12	MTSAT wv	Met5 vis	
Met5 ir	Met5 wv	Met7 vis	Met7 ir	Met7 wv	FY ir1	FY ir2	FY ir3	FY ir4	FY vis
FY vis 1km	GOMS vis	GOMS ir4	GOMS ir6	GOMS ir8	GOMS ir9	GOMS ir10			
1	2	3	4	5	6	7	8	9	10

### Channel 3 - IR 1.6 $\mu$ m - transfer settings

Min 51

Gamma 100

Max 1023

Save as

PNG

Job 0

Save with overlay

(none)

City list

none

Marker list

none

Calibrate thermal

Save raw count

Default image with raw

### Centre HRV window

Upper

Lower

Centred on

Europe

### Image save options

JPEG save quality

Vis 100 IR 100

Resize

1

Save full HRV

Use N HRV

Extra raw PGM info

### Copyright

Location

None

Date & time

Use local time

Font...

### Cartography

Country boundary data file

C:\Program Files\MSG Software\MSG Data M

Browse...

Bold city markers

### Satellite

MSG-3

Delete other

OK

Cancel

Help

# SETTING GEOSAT SIGNAL 7

- GEOSAT SIGNAL 7:
- GO JOB-SETUP:
- SET RGB CHANNELS: 5-6 4-9 1-3
- SET OFFSET:                      SET GAIN:
- RED: 90                              RED: 245
- GREEN: 20                            GREEN: 320
- BLUE: 80                              BLUE: 250

# GEO SAT SIGNAL 7

Job 19 - Convection Storm - setup

Processing Remapping Animation Annotation General

False colour

Thermal FC  
 Fire

Brightness adjust  
 None  
 Stretch  
 Histo equalise

Crispen  
 None  
 Crispen  
 More

RGB settings

Red	Green	Blue
<input type="text" value="WV_073"/>	<input type="text" value="IR_108"/>	<input type="text" value="IR_016"/>
<input type="checkbox"/> Negative	<input type="checkbox"/> Negative	<input type="checkbox"/> Negative
Subtract <input type="text" value="WV_062"/>	Subtract <input type="text" value="IR_039"/>	Subtract <input type="text" value="VIS006"/>
Offset <input type="text" value="90"/>	<input type="text" value="20"/>	<input type="text" value="80"/>
Gain % <input type="text" value="245"/>	<input type="text" value="320"/>	<input type="text" value="250"/>
<input type="button" value="R=G=B"/>	<input type="button" value="Use suggested"/>	<input type="text" value="(none)"/>

Full height HRV

RGB xfer

CLUT   Space is white

Vis ch.   Space is white

City   Bold

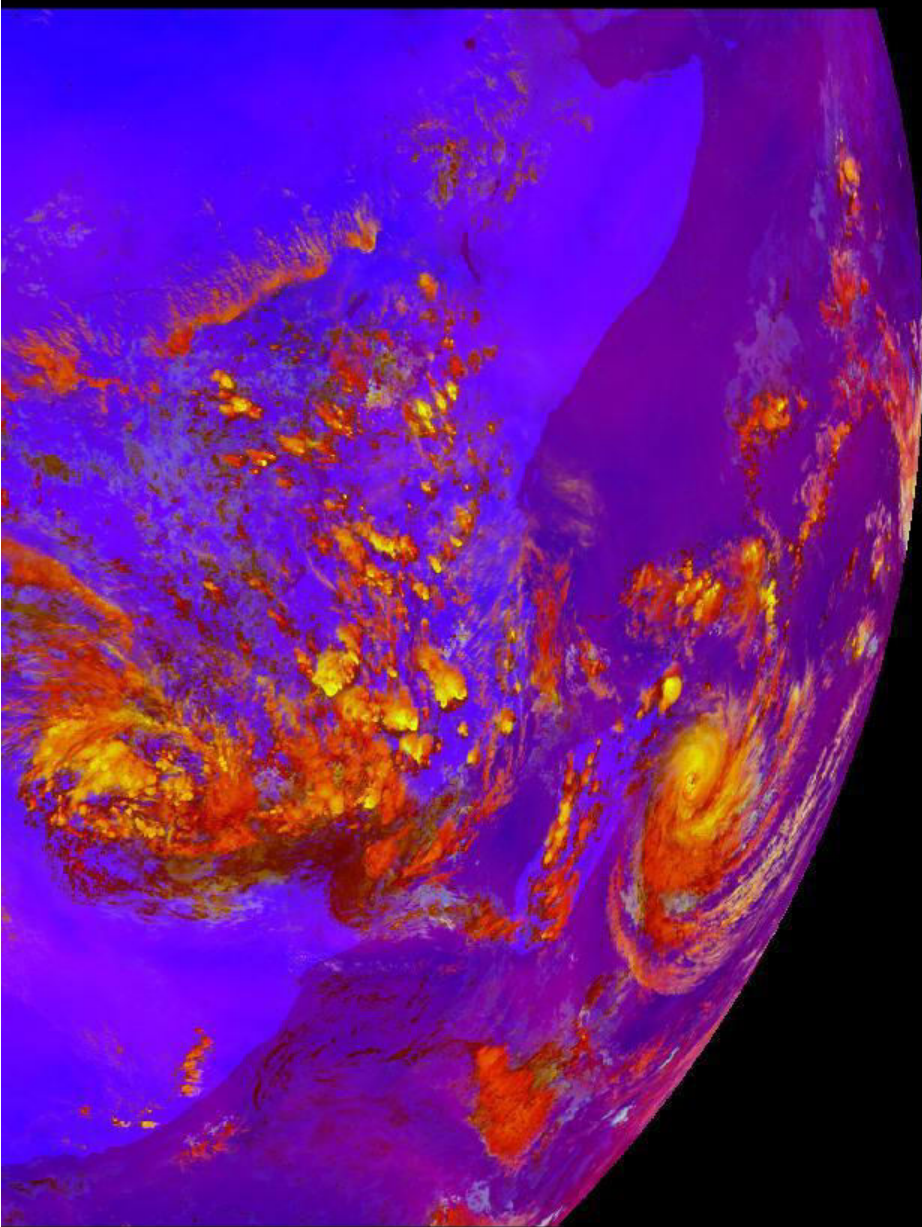
Output format   Save world file

Sea threshold

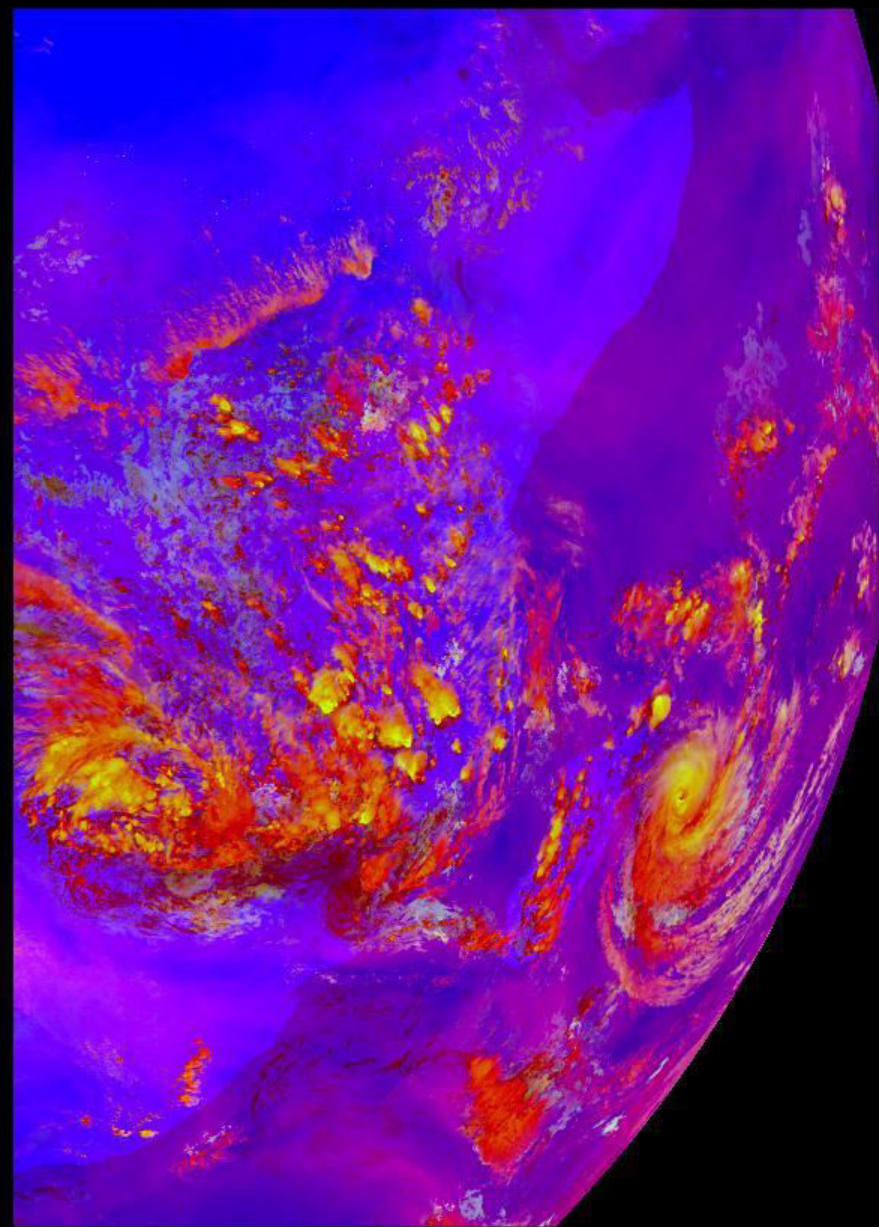


COMPARISON

*EUMETSAT color*

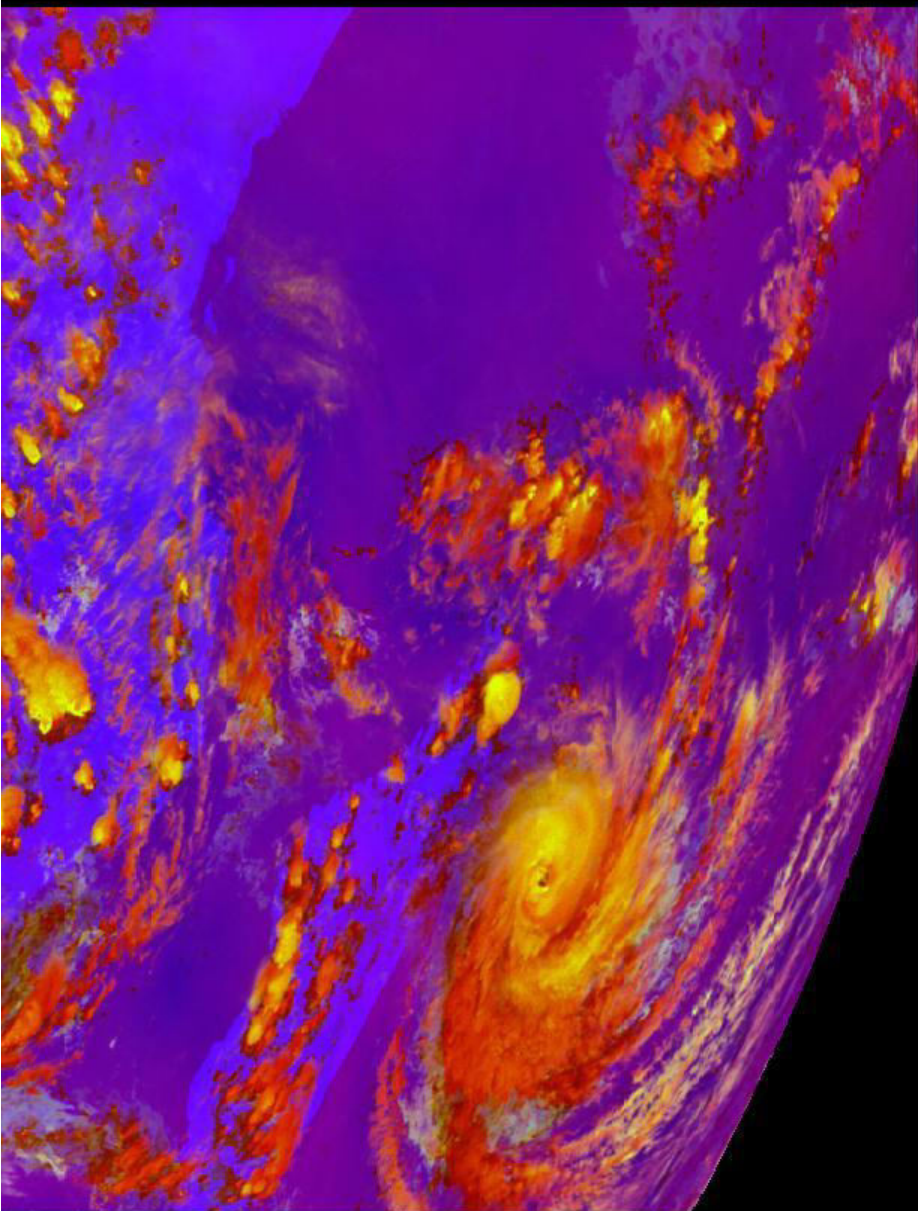


*GEOSAT SIGNAL 7 color*

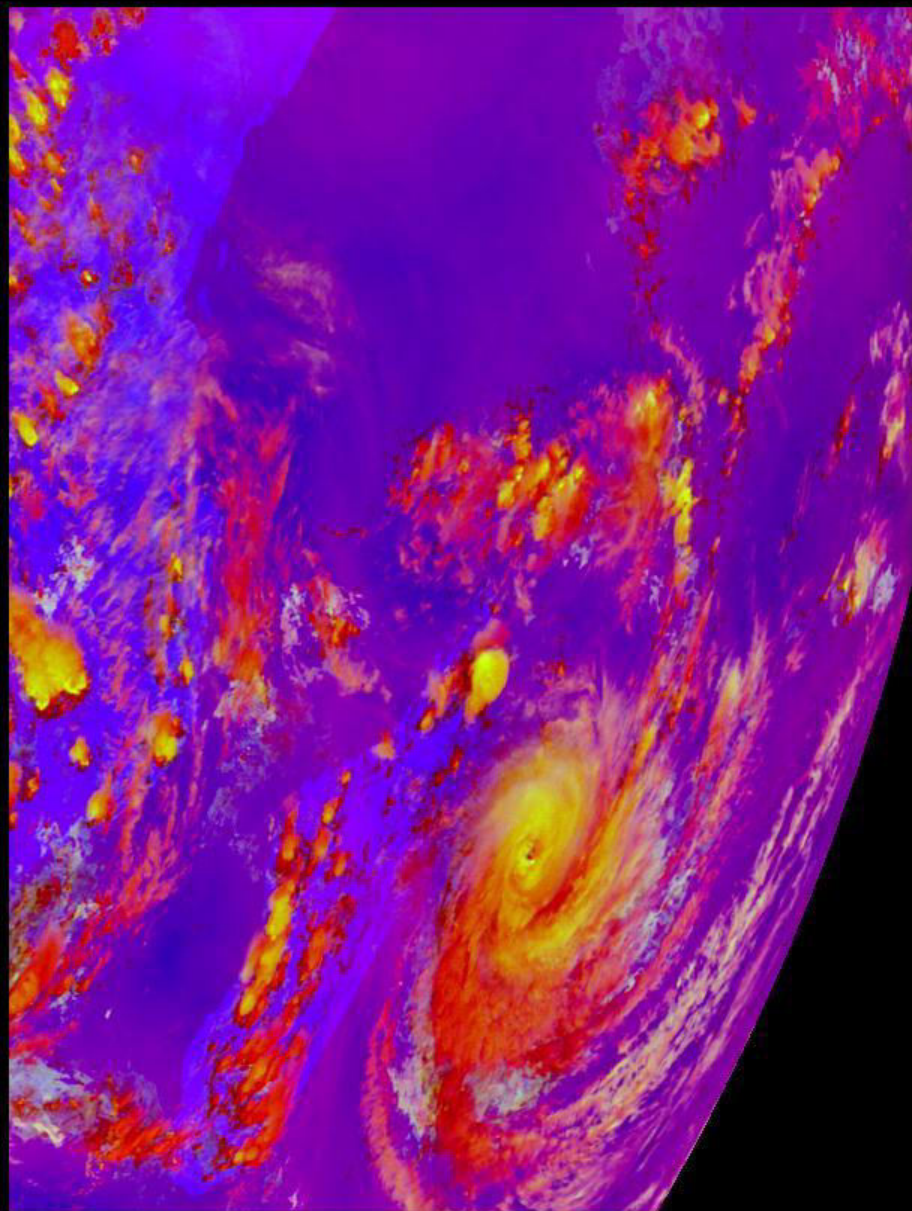




*EUMETSAT color*

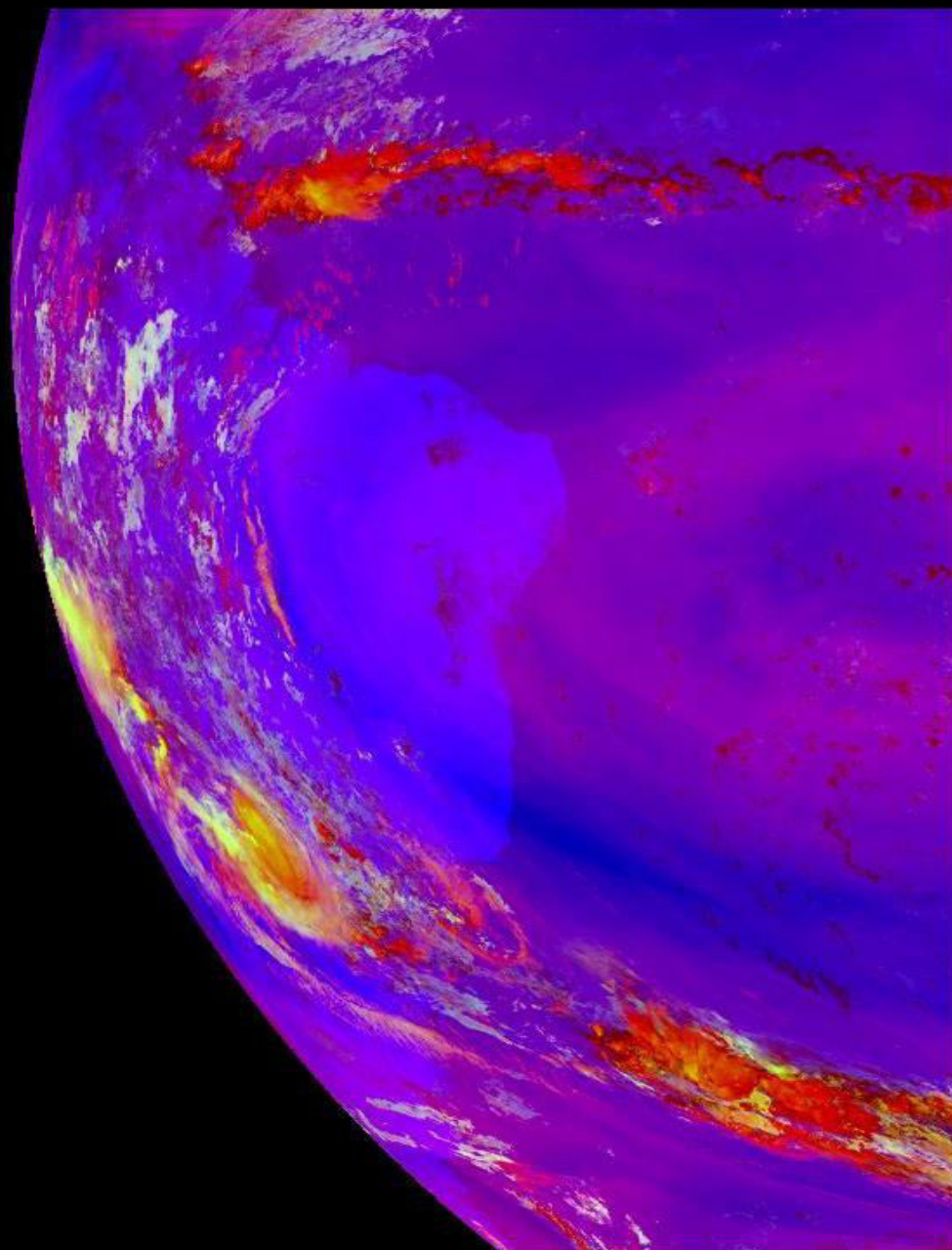


*GEOSAT SIGNAL 7 color*

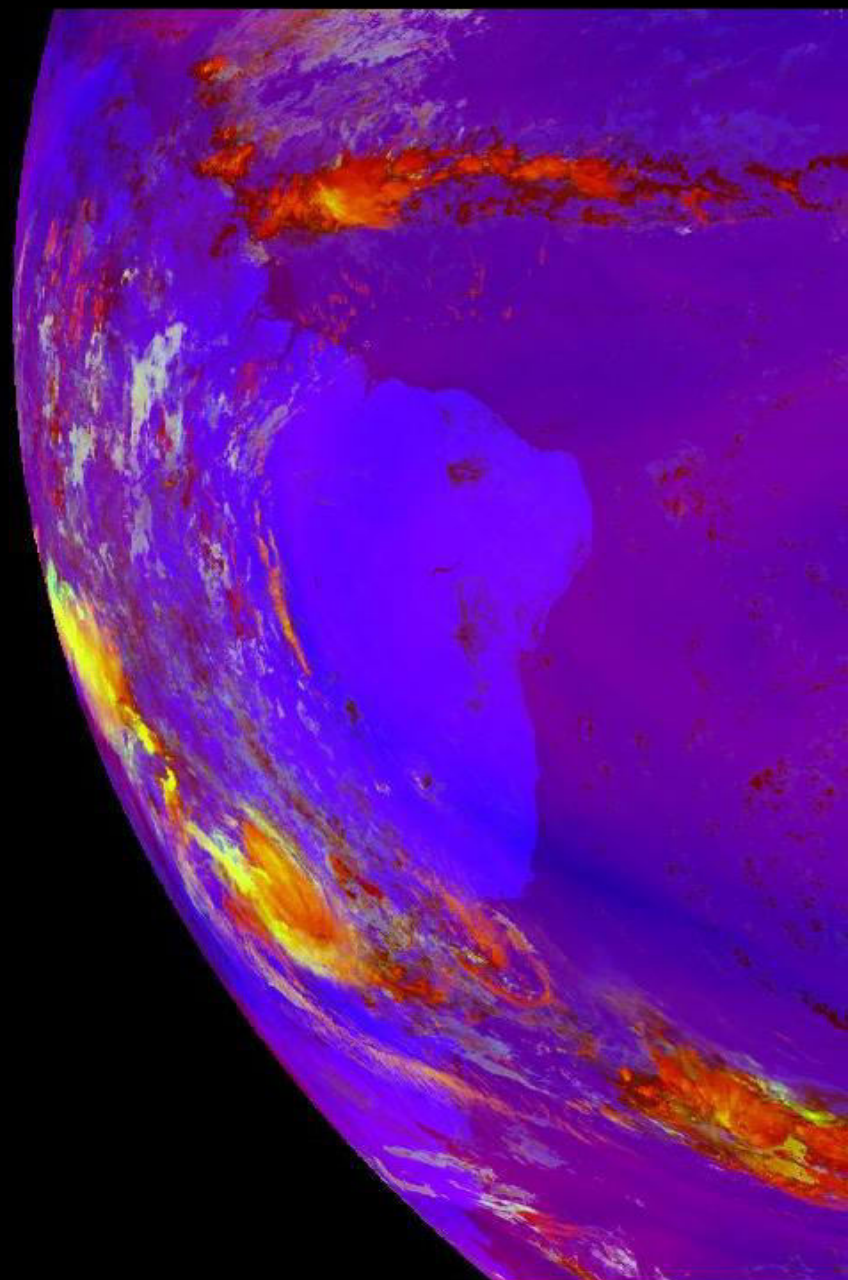




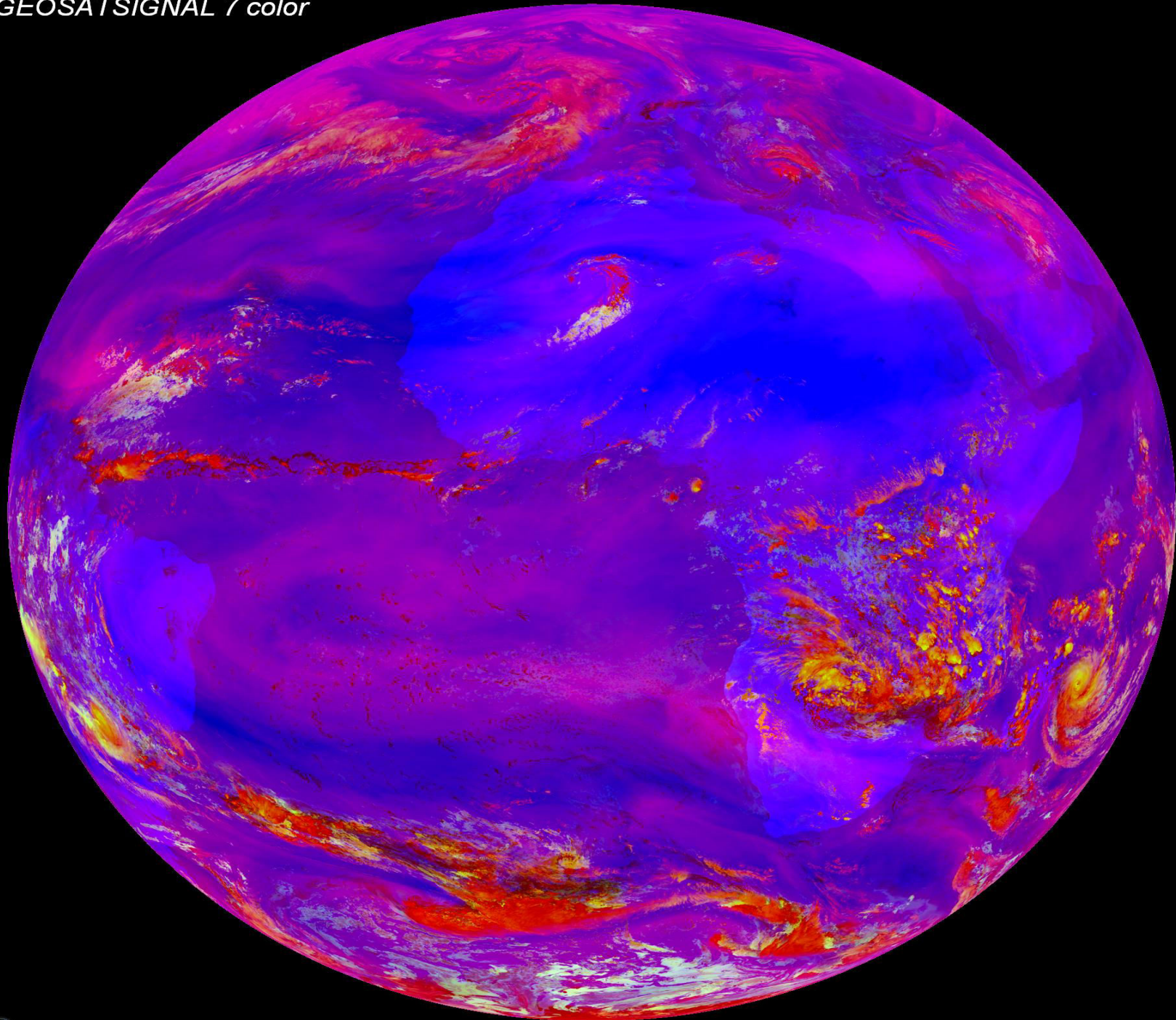
*GEOSAT SIGNAL 7 color*



*EUMETSAT color*

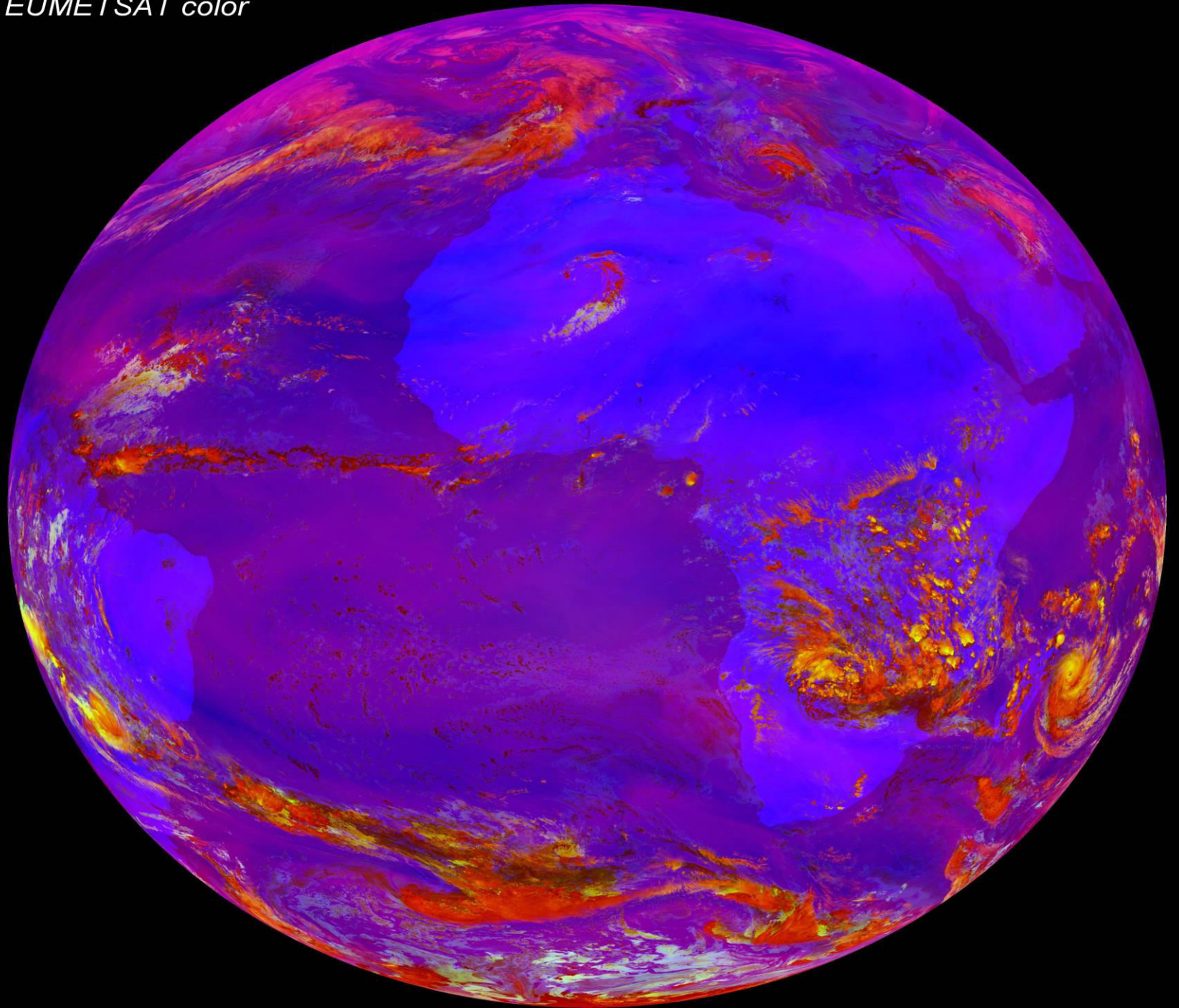








*EUMETSAT color*



END